



Barwell Close, Wallsend
Offers Over £130,000

 3  1  1  C

RICHARDSONS 

Barwell close is a lovely cul-de-sac located in Wallsend, with great road links to the Coast Road and A19, and a variety of local amenities close by. This fantastic three bedroom house is available straight away with no upper chain.

The property comprises; double bedroom, WC and access to the garage on the ground floor. First floor offers a spacious lounge to the front with open staircase, and very smart modern kitchen/diner to the rear. Third floor offers two double bedrooms with fitted wardrobes and a fitted bathroom with white modern suite, bath and overhead shower.

There is a driveway and ample on and off road parking close by.

Please call to arrange a viewing on 0191 290 3770

Additional Information;

Council Tax band - A
Tenure - Freehold

Kitchen

13'1" x 9'6" (4.00 x 2.90)

Lounge

13'1" x 13'1" (4.00 x 4.00)

Bedroom 1

13'1" x 13'1" (4.00 x 4.00)

Bedroom 2

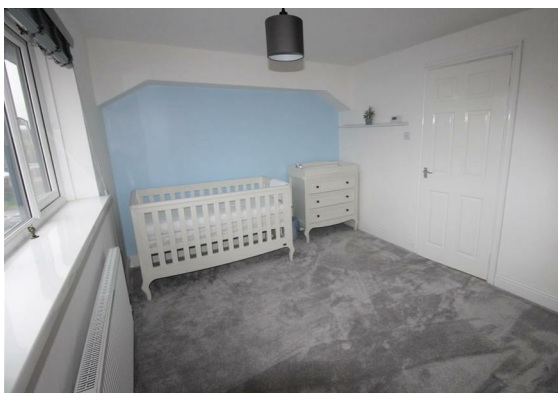
13'1" x 9'6" (4.00 x 2.90)

Bedroom 3

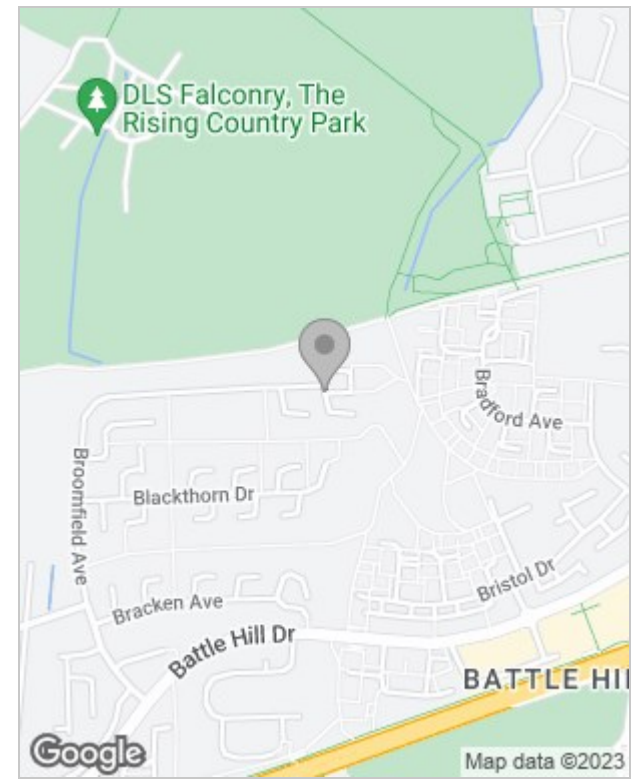
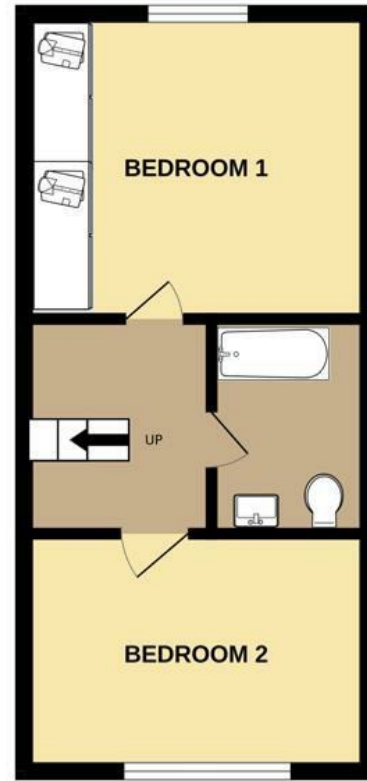
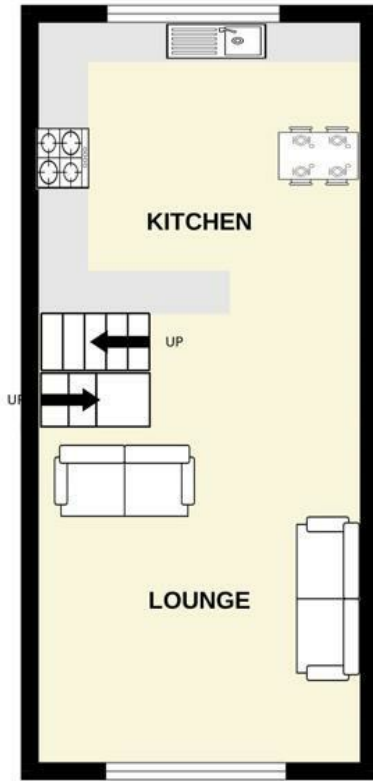
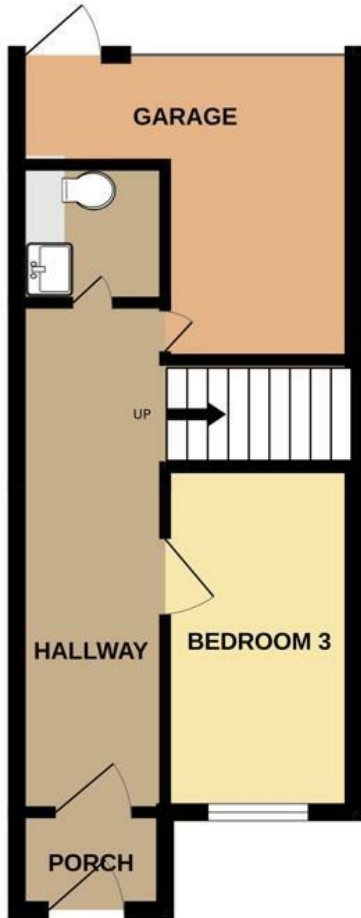
9'6" x 9'6" (2.90 x 2.90)

Bathroom

WC







Energy Efficiency Rating		
	Current	Potential
Very energy efficient - lower running costs		
(92 plus) A		
(81-91) B		
(69-80) C		
(55-68) D		
(39-54) E		
(21-38) F		
(1-20) G		
Not energy efficient - higher running costs		
	73	85
England & Wales	EU Directive 2002/91/EC	

These particulars, whilst believed to be accurate are set out as a general outline only for guidance and do not constitute any part of an offer or contract. Intending purchasers should not rely on them as statements of representation of fact, but must satisfy themselves by inspection or otherwise as to their accuracy. No person in this firm's employment has the authority to make or give any representation or warranty in respect of the property.